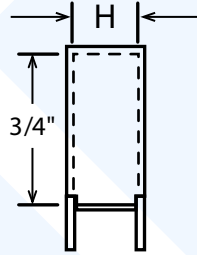
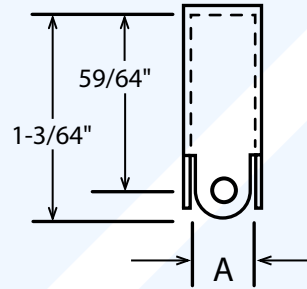


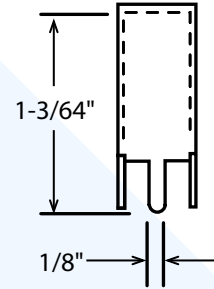
Style 1



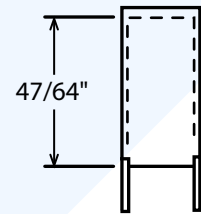
Style 2



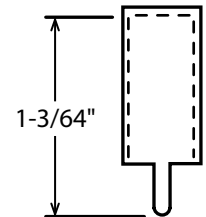
Style 4



Style 5



Style 7



Stock Items

1/4 X 1/4 - Style 1 (0.125/0.140), Style 4, Style 5 ET C only

1/4 X 3/8 - Style 1, Style 4

1/4 X 1/2 - Style 1, Style 4

Stack Height	Available Styles							Available Hole Sizes	A	H
	1	2	3	4	5	6	7			
1/4	X	X		X	X		X	0.098 Extru 0.125 0.140	1/4	17/64
3/8	X	X		X	X			0.125	1/4	25/64
1/2	X	X		X	X			0.125 0.156	3/8	33/64

Tolerances:
 Decimal $\pm 0.005"$
 Fractional $\pm 1/64"$

Material 26 GA
 CRS - Colled Rolled Steel
 ETC-Electro Tin Coated

Phone:(513)793-8100
 FAX:(513)793-0624

Links E-Mail: info@bahrsdie.com
 Web: www.bahrsdie.com



Bahrs
 Die & Stamping Co., Inc.
 4375 Rossplain Rd., Cincinnati, OH 45236